



6 Fortescue Street CHISWICK NSW

3 2 2

An incredibly rare opportunity exists to secure one of Chiswicks last remaining original waterfront properties and create a sensational home in this exclusive enclave. Occupying an expansive 1502sqm street to waterfront allotment and surrounded by spectacular northerly views over the Parramatta River, this landmark property combines size, scope and location as inspiration for its new owner to get creative with a renovation or a substantial new family home (STCA). It offers a superb chance to bring your waterfront dream to life and join this sought-after neighbourhood that has shops, schools, parklands and the ferry wharf all within walking distance.

* A wide 20.12m x 74.68m landholding with direct private waterfront access

Type : House
Price : Auction 9th November 12.45pm
Land Size : 1502 sqm
View : <https://www.prbrealestate.com.au/8142494>

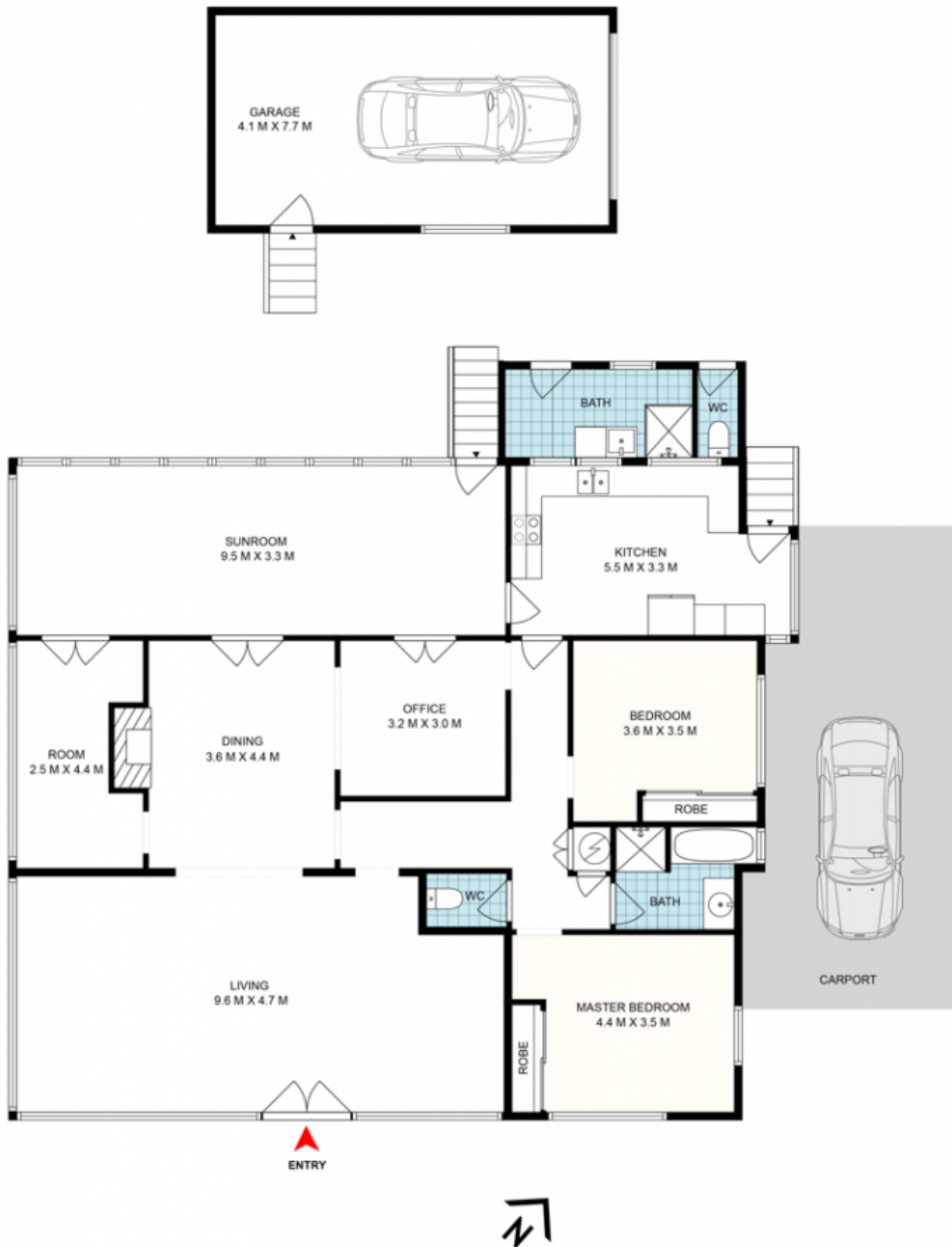


Marcello Biviano
02 9712 3938



Joe Rizzo
02 9712 3938

[For full version visit the website](https://www.prbrealestate.com.au)

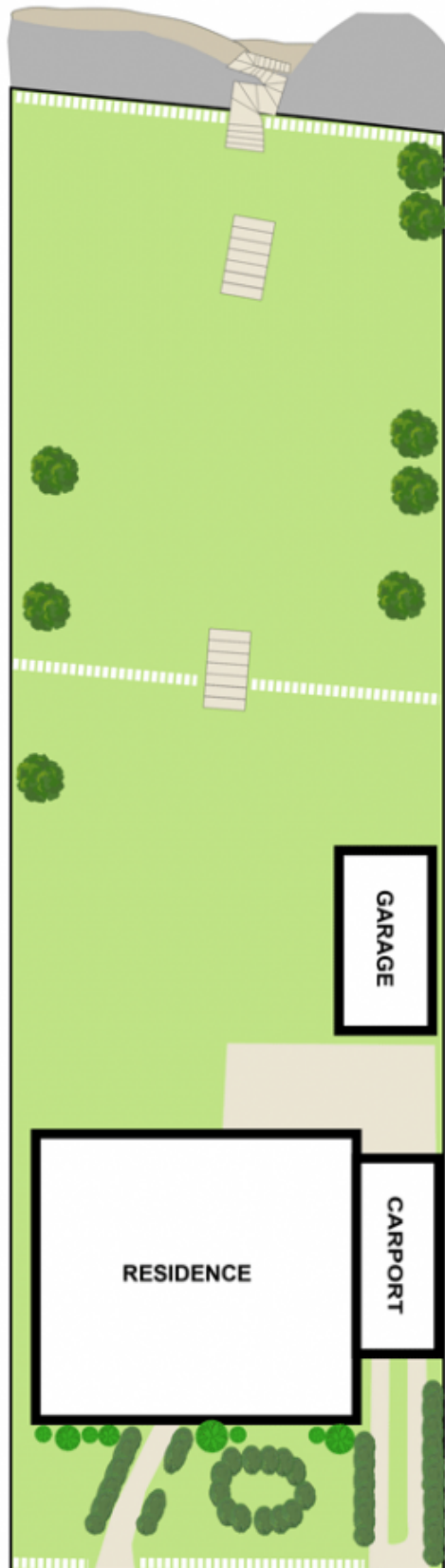


PRB | REAL ESTATE



6 FORTESCUE STREET
CHISWICK

DISCLAIMER: WE HAVE OBTAINED ALL INFORMATION IN THIS DOCUMENT FROM SOURCES WE BELIEVE TO BE RELIABLE; HOWEVER, WE CANNOT GUARANTEE ITS ACCURACY. PROSPECTIVE PURCHASERS ARE ADVISED TO CARRY OUT THEIR OWN INVESTIGATIONS



PRB | REAL ESTATE



**6 FORTESCUE STREET
CHISWICK**

DISCLAIMER: WE HAVE OBTAINED ALL INFORMATION IN THIS DOCUMENT FROM SOURCES WE BELIEVE TO BE RELIABLE; HOWEVER, WE CANNOT GUARANTEE ITS ACCURACY. PROSPECTIVE PURCHASERS ARE ADVISED TO CARRY OUT THEIR OWN INVESTIGATIONS